



JL
OFFSHORE AS
www.jloffshore.com

Tekst

Your One Stop Shop for
Oilfield Equipment and Spares

MHWirth TPK-2200

Partnumber and Description

10 230 232 - BUSHING HOLDER, DRWG. 2303854

10 230 234 - INSERT COVER, DRWG. 2202674

10 230 243 - INTERMEDIATE PIECE, DRWG. A2303859

10 230 244 - WEAR RING, DRWG. A2404881

10 230 263 - CLAMPING PIECE COMPL, DRWG. A2203905

10 230 437 - BUSHING FIXTURE, DRWG. 2403961

10 230 550 - COVER, SCREWED, DRWG. 2101845

10 230 551 - PRESSURE PIECE, DRWG. 2305012

10 230 553 - PISTON, DRWG. 2305027

10 230 557 - THREADED RING

10 230 560 - MANIFOLD, PRESSURE

10 230 561 - SCREWED BOTTOM F/PRESSURE DISTRIBUTOR, DRWG. 2202699

MHWirth TPK-2200

Partnumber and Description

10 230 571 - SUCTION VALVE HOUSING, DRWG. A2101842

10 230 580 - CONNECTING ROD

10 230 581 - SLIDE WAY

10 234 077 - CRANKSHAFT ONLY, DRWG. 2203651, POS. 2

10 234 108 - SUCTION PIPE COMPILATION

10 234 127 - COVER

10 234 153 - CLAMPING FLANGE, DRWG. 2203658 (2102288/11)

10 234 156 - HOUSING, DRW. 2203660, 2102328 POS. 8

10 234 157 - CAP F/STUFFING BOX, DRW. 2203661, 2102328 POS. 7, B0044588, POS. 3

10 234 158 - SEAL RD 220/159 X 1, DRWG. A2407049

10 234 159 - RAIL F/STUFFING BOX

10 234 164 - SAFETY WASHER

10 234 167 - SPACER

MHWirth TPK-2200

Partnumber and Description

10 234 173 - COVER

10 234 176 - FLANGE, INTERMEDIATE

10 262 431 - PISTON ROD (1 5/8"), DRWG. A2203886

10 263 551 - LINER, 6", C/W SEAL, DRWG. 2407215

10 264 371 - CROSSHEAD ROD

11 001 010 - PRESSURE CONNECTION, A2204047

11 001 135 - SEALING, RE 480/350 X 2

11 001 812 - SEALING

11 004 896 - SEAL

11 005 681 - GASKET

11 009 492 - SEALING

11 011 689 - SEALING \emptyset 138 / \emptyset 90 X 2, 2001735/91

11 016 239 - SEAL, 483 / 460 OD X 2 M (61 000 023 / 21 672 132)

MHWirth TPK-2200

Partnumber and Description

11 019 063 - SEAL, FLAT, 2 MM, Ø323/246

11 019 068 - FLAT SEAL 2MM, Ø220/167

11 041 360 - BEARING CASE

11 041 361 - CLAMPING RING

11 041 364 - COVER, BEARING HOUSING

11 041 366 - GASKET

11 042 293 - FLAT SEALING

11 042 721 - SEAL

11 050 786 - BUSHING, VALVE GUIDE, DRWG. B0033479

11 054 576 - SUCTION STABILIZER (BA0037762)

11 056 639 - HOOD, PROTECTION

11 057 542 - PROTECTION HOOD

11 057 771 - PROTECTION COVER

MHWirth TPK-2200

Partnumber and Description

11 072 345 - NUT, REPLACEMENT F/10234139

11 072 346 - NUT M30 / M60 X 4, REPLACEMENT F/10234140

11 072 347 - NUT, M48 (REPLACES P/N 10 234 142, 2305488) BA0090077

11 072 348 - NUT M48 / M30 (REPLACES P/N 10 234 143)

11 085 963 - SEALING

11 091 317 - PRESSURE MANIFOLD, DRWG. 11 091 318

11 092 291 - PALL FILTER SUPPORT

11 092 371 - THREAD PLATE

11 093 794 - OIL LEVEL GAUGE

11 096 270 - END PLATE

11 100 562 - SUPPORT FOR PRESSURE MANIFOLD (REPL. P/N 10 234 174)

14269 - REPAIR KIT, WASHPIPE

14822 - MUD PIPE (271 858)

MHWirth TPK-2200

Partnumber and Description

19862 - SCREW, HEX HEAD

19863 - CIRCLIP (271845)

20 227 423 - BOLT, STUD, 1 1/4"-8UN

20 228 419 - SEAL, 0771-70-0697-07, 7500 PSI

20 230 218 - SEAL, 0771-70-0746-07, 7500 PSI, REPL. P/N 230 225

20 230 219 - STUD, M48

20 230 221 - NUT M48, DRWG. 2303849

20 230 230 - NUT, HEX, M36, DRWG. A2303852

20 230 256 - PROTECTION HOOD, DRWG.. 2202544

20 230 328 - SUPPORING RING POLYAMID 84/72

20 230 329 - GROOVED RING PUR 72X84X9.6X6 (1541-114.516)

20 230 330 - SEAL, COMPACT, S 8-100, 1541-027.657

20 230 331 - SUPPORTING RING, POLYAMID 115/100, DRW. 2404874

MHWirth TPK-2200

Partnumber and Description

20 230 358 - STRAINER SCREEN, DRWG. 2203474 (SEE P/N 10 230 357)

20 230 445 - SEALING RING NO. 1292257, DRWG. A2405914

20 230 453 - SEAL, COMPACT ROD, 63/75RD, 1541-007.539, BA0055776

20 230 459 - SEALING RING, SOFT IRON

20 230 469 - O-RING 2-446 C/W SUPPORT RING 8-446

20 230 470 - RING, GROOVED, 120 X 145 X 19 X 12.5, 2520-096 776

20 230 471 - DIRT SCRAPER, 120 X 135 X 16, NO. 24004976

20 230 485 - O-RING, 2-28N 674-70, 34.65 X 1.78

20 230 511 - VALVE, BALL

20 230 552 - STUD, M36, DRWG. A2305039

20 230 564 - O-RING, NO. 2-362, NBR90, 158,12 X 5,33

20 230 565 - SUPPORTING RING, 8-362

20 232 025 - SEAL, COMPACT 50/60X8, 1541-007.494

MHWirth TPK-2200

Partnumber and Description

20 232 038 - COMPENSATOR, RUBBER

20 234 093 - FILTER, TLF II 4-50 G130, INCL. FILTER ELEMENT 20234326

20 234 137 - SPLASH DISK, DRWG. 2404877

20 234 141 - TENSION SCREW M48 X 284 DRWG. A2305485

20 234 213 - HEX SCREW

20 234 251 - SEALING RING, SOFT IRON

20 234 338 - FLOW SWITCH

20 260 794 - SPRING, VALVE, 6.3 X 80 X 132, DRWG. A2406323

20 260 797 - BUSHING, DRWG. 2405878

20 263 553 - SEAL, LINER

20 263 554 - SEAL, LINER, 6" ZIRCONIA & 6 1/2" CHROME IRON, TPK-2200

20 263 558 - SEAL, LINER, 5 1/2" ZIRCONIA & 6" CHROME IRON, TPK-2200

20 263 561 - SEAL, LINER, 5" ZIRCONIA & 5 1/2" CHROME IRON, TPK-2200

MHWirth TPK-2200

Partnumber and Description

20 263 588 - SEAL, LINER, 7" ZIRCONIA & 7 1/2" CHROME IRON, TPK-2200

20 267 709 - SEAL, COPPER, 23.5/8 RD X 2

20 267 715 - PROTECTION CAP, DRWG. 2400073

20 298 053 - BRAKE CALIPER SET, BSFH 520-M (1 SET= 2 HALVES)

20 298 105 - FILTER ELEMENT, TYPE HC 9600 FKS 8H

20 298 196 - SEALING RING, DRWG. 5922012

20 322 141 - ELEMENT, SPARE FILTER

20 541 983 - KEY, STEEL

20 604 770 - KEY, FITTING

20 612 949 - PLUG, SCREW

20 622 301 - BEARING, CYLINDER ROLLER (DRIVE SHAFT)

20 624 301 - BEARING, CRANKSHAFT, TPK-2200

20 626 436 - BEARING, CYL. ROLLER, BC1B-320202B

MHWirth TPK-2200

Partnumber and Description

20 628 345 - SLEEVE, F/CRANKSHAFT BEARING

20 630 265 - SHAFT PACKING RING, 260 X 300 X 20

20 631 029 - RING, SEALING

20 631 422 - O-RING, 109.2 X 5.7-NBR-90, SHORE A

20 631 578 - O-RING, 189.2 X 5.7

20 641 314 - HEX SCREW

20 641 318 - HEX SCREW W/NUT & WASHER

20 642 504 - HEX SCREW

20 642 624 - SCREW, HEXAGONAL

20 642 750 - SCREW, HEX, ISO 4017-M24X60-8.8-A2A

20 642 754 - SCREW, HEX, ISO4017-M24X70-8.8-A2A

20 642 756 - SCREW, HEXAGONAL, M24 X 75, A2A

20 642 758 - SCREW, HEXAGONAL

MHWirth TPK-2200

Partnumber and Description

20 642 979 - SCREW

20 643 000 - VERBUS RIPP SCREW, W158-M12X30-10.9

20 643 650 - SCREW, SOCKET

20 644 440 - SCREW, CYLINDER

20 646 650 - STUD, M42, DRWG. A2305040

20 646 660 - BOLT 1 1/8" UN X 145, DRWG. A2406531

20 650 042 - HEXAGONAL NUT ISO 4032-M20-8-A2A, DRWG. A2201143, ITEM 6

20 650 046 - NUT, HEXAGONAL

20 651 414 - NUT, HEX, ISO 10511-M36-05-A2A

20 654 015 - NUT 1 1/8" UN X 145, DRWG. A2406532

20 654 020 - NUT, HEXAGONAL M42, DRWG. A2305044

20 666 422 - WASHER

20 666 429 - WASHER

MHWirth TPK-2200

Partnumber and Description

20 666 534 - WASHER, SPRING

20 674 125 - LOOP

20 674 130 - RUBBER CORD, 10+-0.50-NBR

20 674 134 - CORD, RUBBER, 14 DIA., 70 SHORE

21 000 270 - SCREW, HEX, M30 X 60

21 000 279 - WASHER

21 000 924 - NUT, HEX, M16, DRWG. B0019014 IT. 3

21 000 932 - HEX SCREW

21 001 267 - SCREW, HEX, M12 X 30

21 001 278 - SCREW, HEXAGONAL

21 001 312 - PRESSURE GAUGE, MOD. 8 (BA0079573 / 382281)

21 002 713 - CAP SCREW

21 003 872 - HEX NUT M48

MHWirth TPK-2200

Partnumber and Description

21 006 515 - FILTER, S280

21 006 564 - SCREW, HEX

21 006 565 - SCREW, HEX

21 008 426 - HEX SCREW

21 016 635 - HAND PUMP

21 018 076 - VALVE, PRESSURE RELIEF

21 020 746 - ROLLER, 4 1/2" TYPE 3-13/0148

21 021 909 - DIAPHRAGM

21 024 718 - SEALING RING, SOFT IRON

21 025 939 - ROLLER, REPLACES P/N 20 299 333

21 027 492 - GASKET, 208/186X11, DRWG. 2401429, POLYURETHAN

21 030 360 - SHAFT, DRIVE, REPLACEMENT F/10 230 032

21 030 361 - WHEEL, GEAR (REPLACEMENT F/10 230 036)

MHWirth TPK-2200

Partnumber and Description

21 032 288 - HEX SCREW, DRWG. B0025047, ITEM 8

21 032 289 - O-RING

21 032 361 - O-RING, 460 X 6, B0025048 POS. 04

21 032 482 - GEARBOX F/TPK-2200, DRWG.: B0028895/04

21 032 930 - EXPANSION JOINTS, DRWG.: B0028895/09

21 032 950 - SCREW, HEX

21 034 431 - FLANGE

21 035 784 - GAUGE, PRESSURE, 0-6 MPSI, F/STD SERVICE,

21 037 600 - PUMP, GEAR + 21 066 335, MOTOR

21 047 243 - HEAT EXCHANGER (OIL WATER)

21 047 414 - SCREW

21 049 677 - CHARGING HOSE ASSY

21 051 821 - LIQUID SEAL

MHWirth TPK-2200

Partnumber and Description

| |
|---|
| 21 052 162 - SCREW, TENSION (REPLACES P/N 20 234 138) |
| 21 055 344 - HP PULSATION DAMPENER, DNV CERTIFIED |
| 21 055 663 - BALL COCK, VALVE |
| 21 055 875 - ABSORBER, BASE |
| 21 055 876 - SPARE PART ABSORBER, REPLACES P/N 21005428 |
| 21 059 403 - VALVE, RESET RELIEF, 3000 - 8000 PSI W/3" FIG. 1502 MALE INLET x |
| 21 060 013 - SHAFT SEALING RING |
| 21 060 014 - SHAFT SEALING RING |
| 21 061 067 - MAIN MOTOR, 690V, 1655 KW BLOWER 480V |
| 21 061 210 - MUD GATE VALVE |
| 21 066 334 - LINER COOLING PUMP, ALLWEILER |
| 22635 - BOX, STUFFING UPPER (271856) |

JL
OFFSHORE AS
www.jloffshore.com





JL
OFFSHORE AS
www.jloffshore.com



JL
OFFSHORE AS
www.jloffshore.com

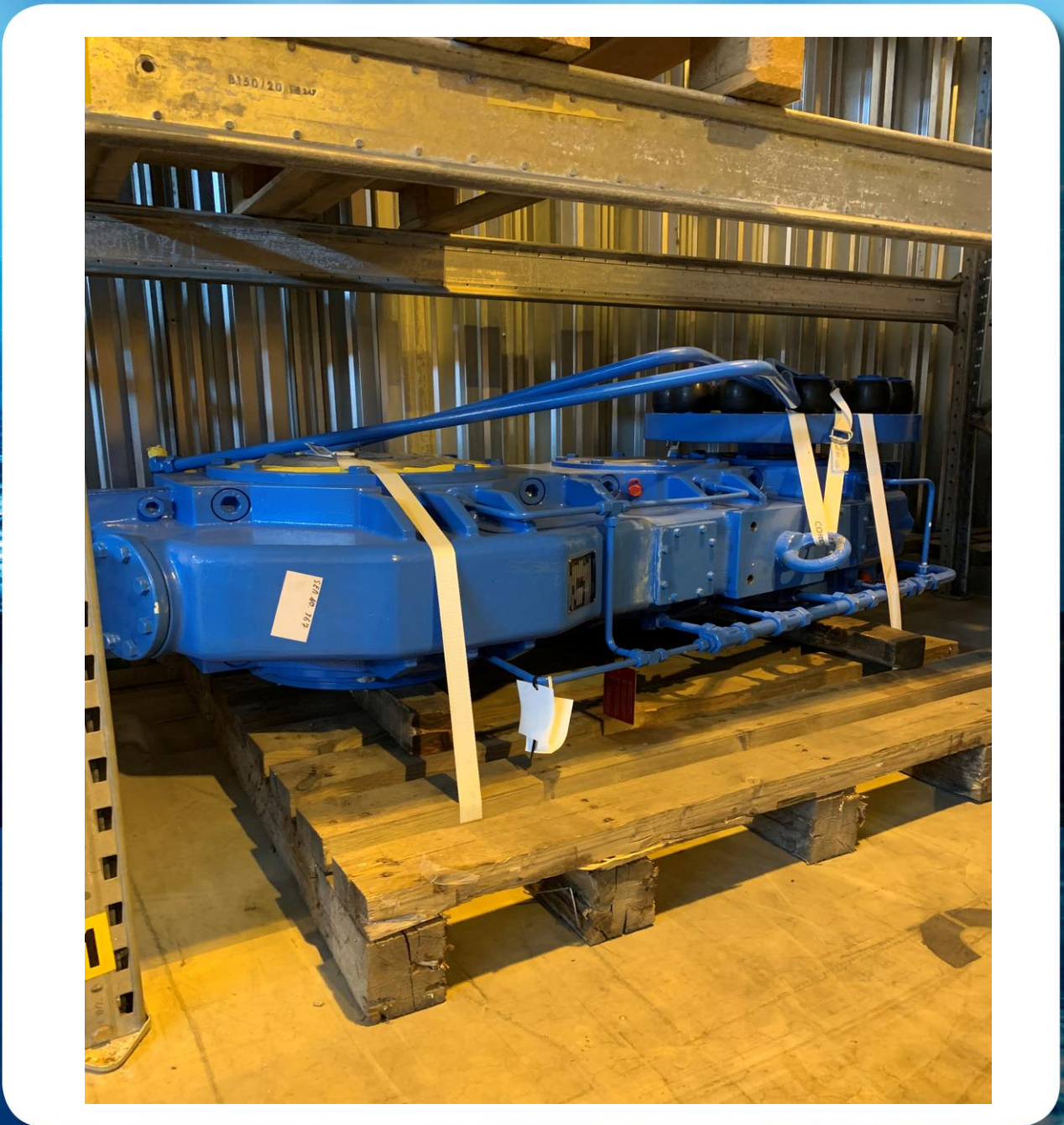


JL
OFFSHORE AS
www.jloffshore.com





JL
OFFSHORE AS
www.jloffshore.com



JL
OFFSHORE AS
www.jloffshore.com



JL
OFFSHORE AS
www.jloffshore.com



JL
OFFSHORE AS
www.jloffshore.com

